

Quiz 4A

Closed book/notes. No calculators allowed.

Name:

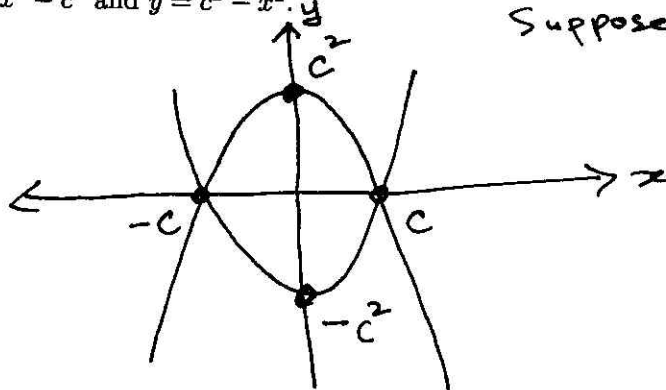
Prof. Medina

UAlbany Email:

Solution

1. Sketch the region, clearly labeling all intersects, of the area bounded between the two parabolas $y = x^2 - c^2$ and $y = c^2 - x^2$.

Suppose $c \neq 0$.



2. Setup the integral, but do not evaluate, of the area bounded between the two parabolas $y = x^2 - c^2$ and $y = c^2 - x^2$.

$$\int_{-c}^c (c^2 - x^2) - (x^2 - c^2) dx$$

Grade: /10