

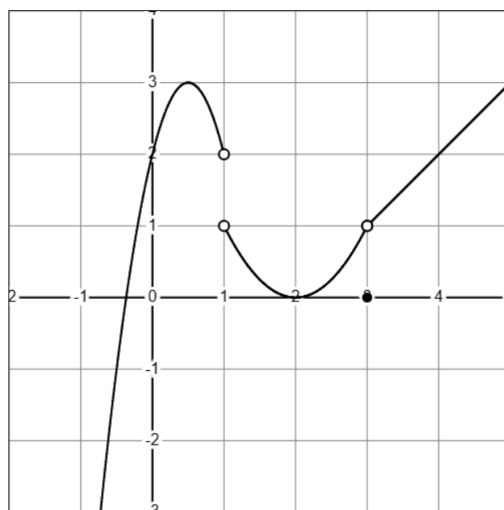
Quiz 3A

Closed book/notes. No calculators allowed.

Name:

UAlbany Email:

1. The graph of the function f is given below.



Find the following limits. If the limit does not exist, write DNE.

a) $\lim_{x \rightarrow 1^-} f(x) =$

b) $\lim_{x \rightarrow 1^+} f(x) =$

c) $\lim_{x \rightarrow 1} f(x) =$

d) $\lim_{x \rightarrow 3} f(x) =$

e) $f(3) =$

Grade: /10