

Quiz 2A

Closed book/notes. No calculators allowed.

Name:

Solution

UAlbany Email:

1. Consider the piecewise defined function:

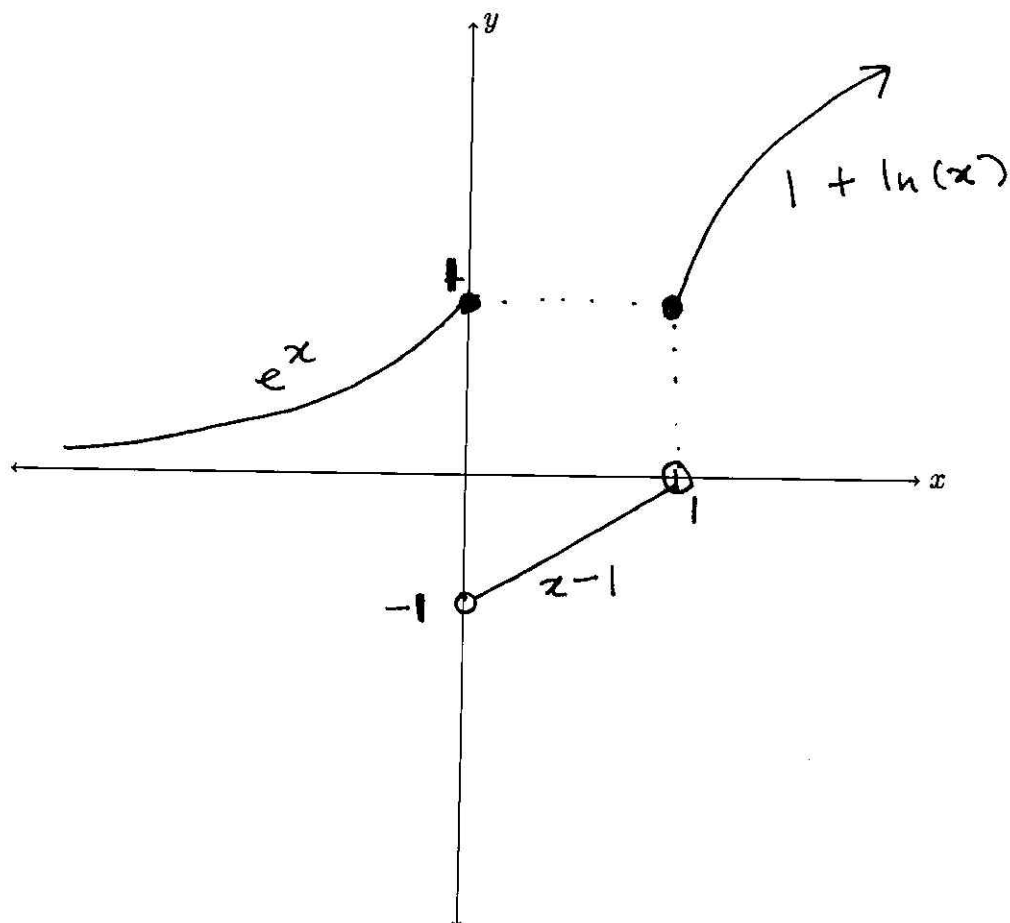
$$f(x) = \begin{cases} e^x, & \text{if } x \leq 0 \\ x - 1, & \text{if } 0 < x < 1 \\ 1 + \ln(x), & \text{if } x \geq 1. \end{cases}$$

(a) (4 Points) Fill in the blanks: $f(0) = \underline{1}$ and $f(1) = \underline{1}$.

$$f(0) = e^0 = 1$$

$$f(1) = 1 + \ln(1) = 1 + 0 = 1$$

(b) (6 Points) Sketch the function f in the axis below. Clearly label all intercepts.



Grade: /10